



HAYS GALLERIA

# 6 Hay's Lane



Located in the heart of London,  
6 Hay's Lane is a perfectly connected,  
intelligent workspace.



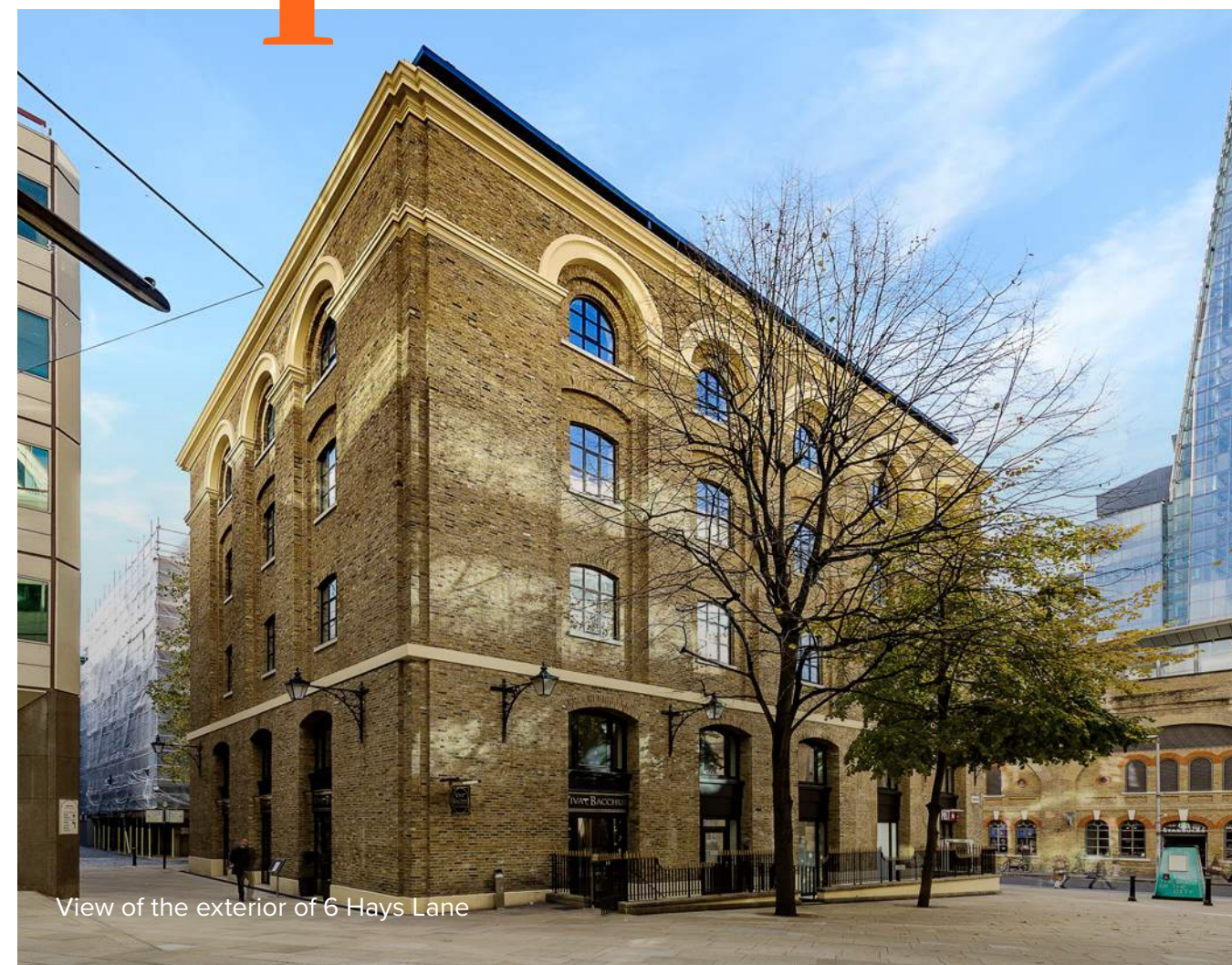
# The Building



# Workspace at the heart of the Capital



View of the exterior of 6 Hay's Lane



View of the exterior of 6 Hays Lane



6 Hay's Lane is a perfectly connected, intelligent workspace. Sensitively restored, it possesses all the character of a historic, wharf building, but possesses vastly improved operational facilities and details.

Keeping in line with the rest of the Hay's Galleria estate, 6 Hay's Lane will deliver best-in-class offices, rich in character and nestled at the heart of a thriving, seven-day destination.



Level 1 fitted floor



Level 1 fitted floor

# Building Overview



Car parking  
available\*



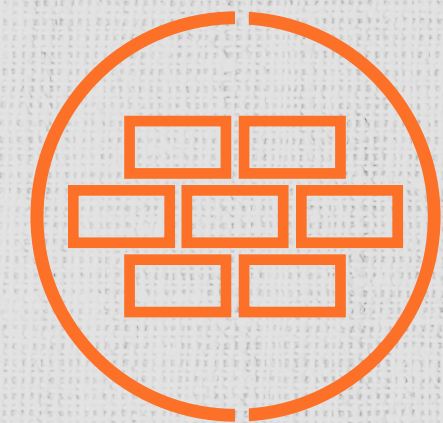
200+ Bicycle  
spaces available\*



Occupancy ratio  
up to 1:8



New exposed  
4-Pipe fan coil  
air conditioning



Heritage  
Features



2 brand new  
passenger lifts



Openable  
windows



3m floor-to-soffit  
height



Fibre activated



Luxury changing  
facilities

# Stacking Plan

05

3,340 sq ft  
310 sq m

04

Jägermeister

03

CLA

02

MZA CONSULTING  
ENGINEERS

01 (Fitted)

SWAN PARTNERS

Total

3,340 sq ft  
310 sq m



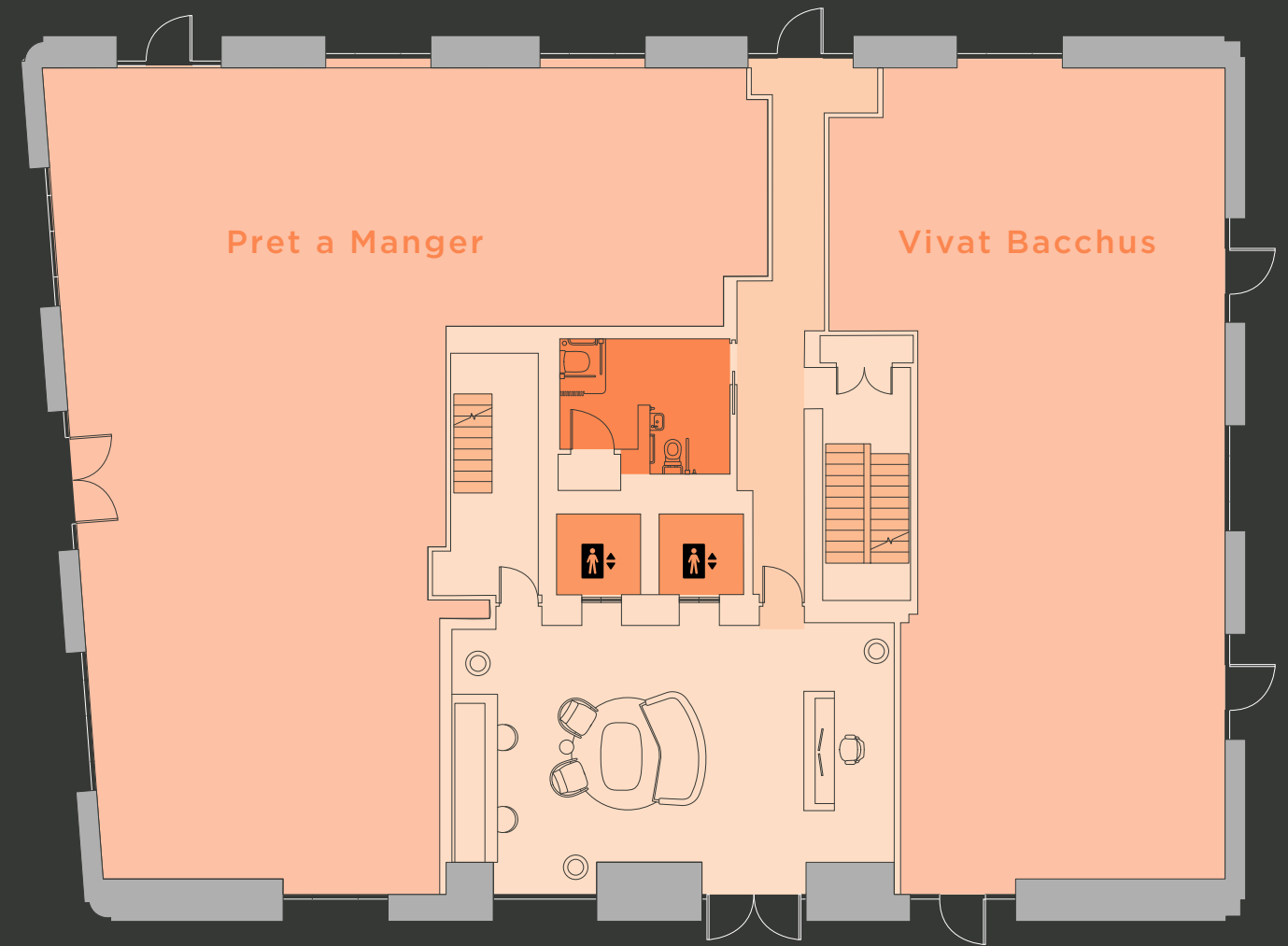
# Ground Floor

Reception



N

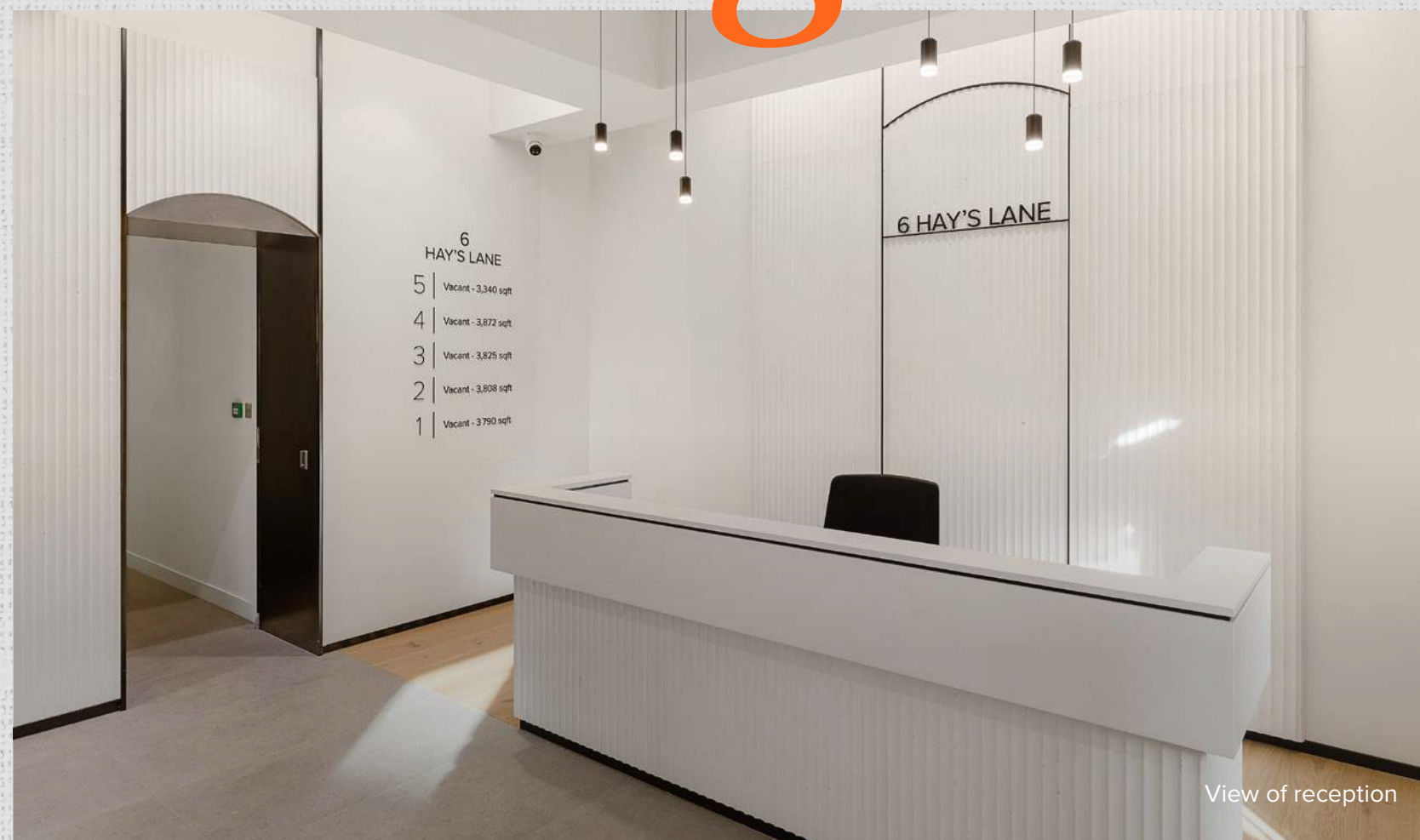
TOOLEY STREET



HAY'S LANE



# Warm, welcoming entrance

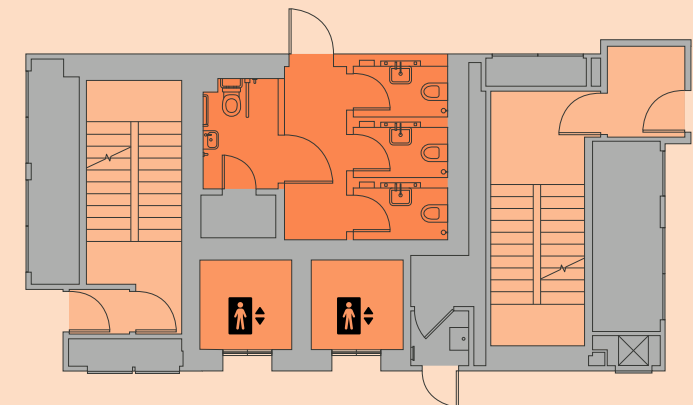


# Level Five

3,340 sq ft / 310 sq m



TOOLEY STREET



HAY'S LANE

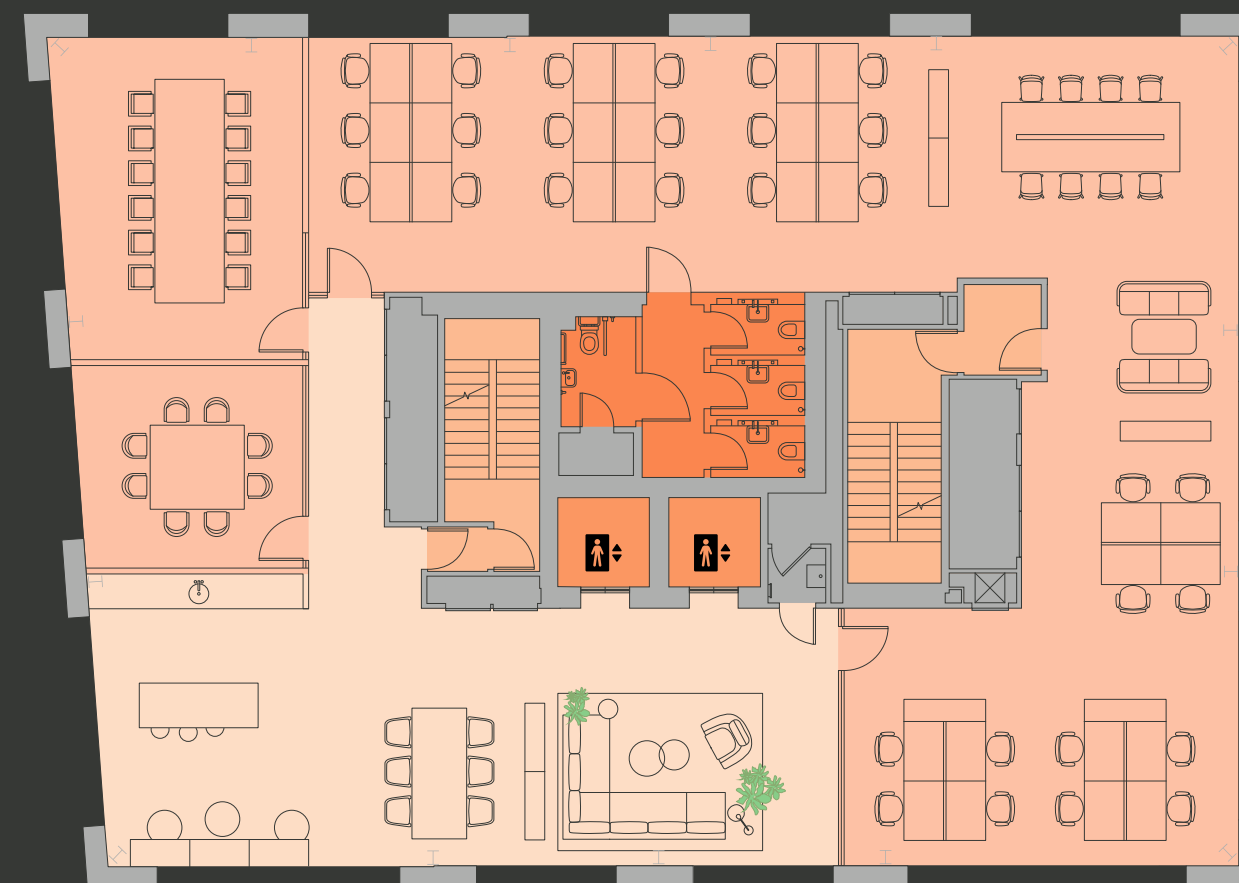
# Level Five

3,340 sq ft / 310 sq m

- 1 Reception Area
- 1 Kitchenette
- 1 Soft seating
- 1 Breakout space
- 1 8 person meeting room
- 1 12 person board room
- 30 Desks



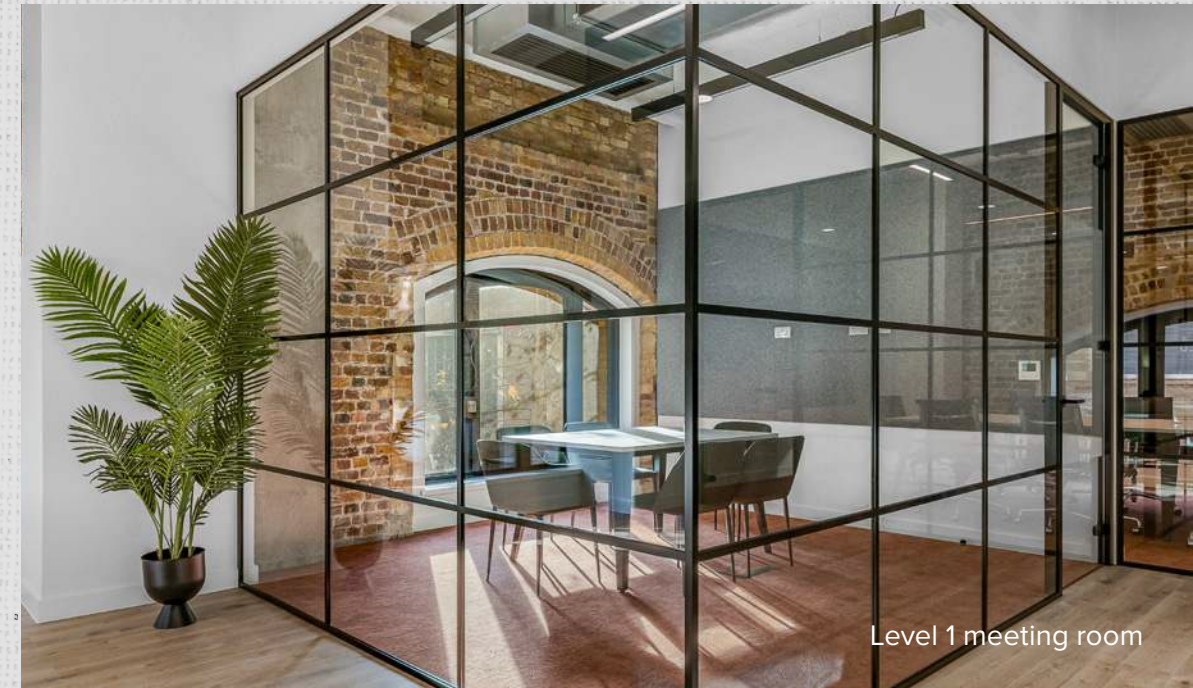
TOOLEY STREET



HAY'S LANE



Level 1 fitted space



Level 1 meeting room

# Bright, expansive floorplates



Level 1 fitted space

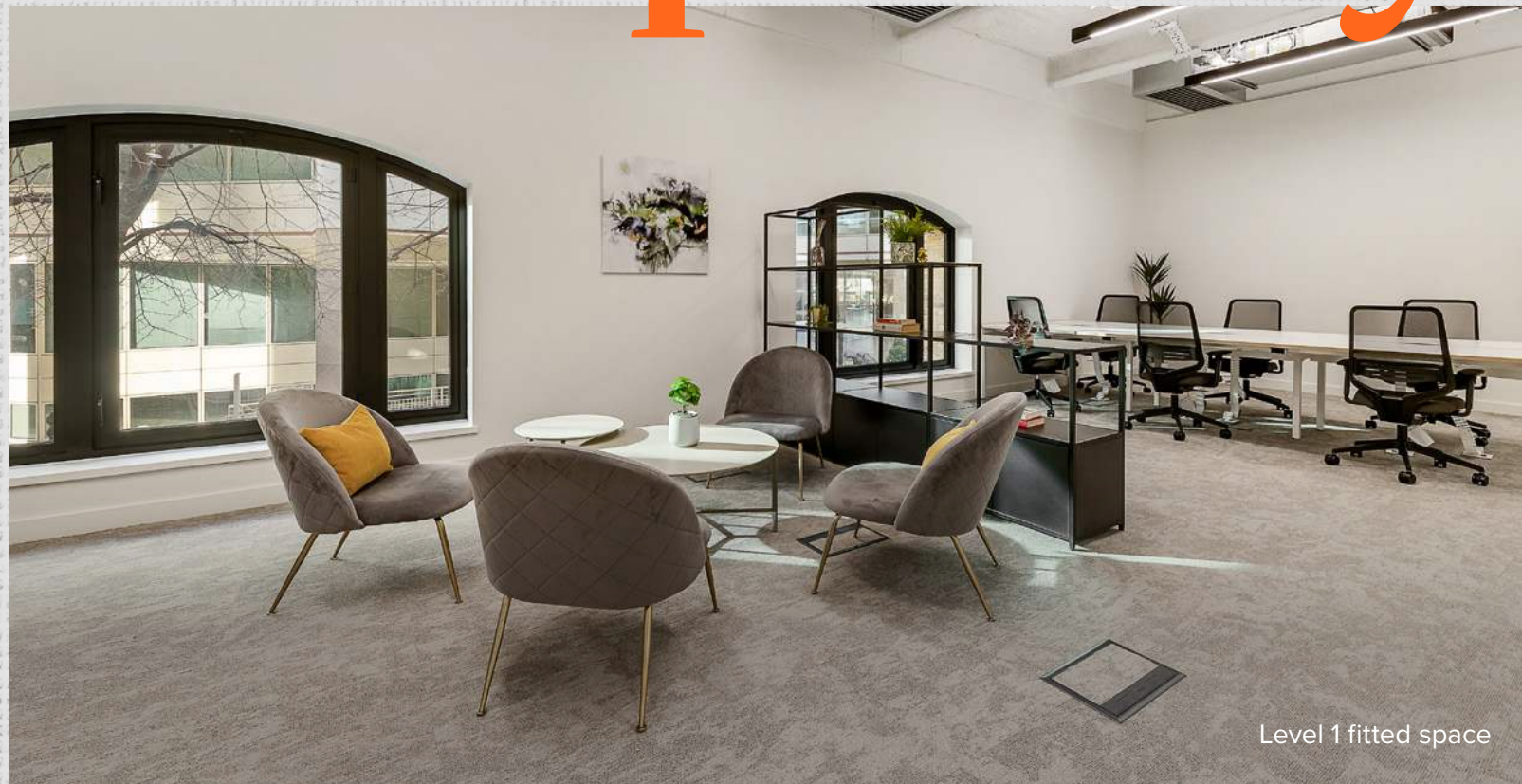


Level 1 fitted space



Level 1 fitted space

# Where heritage meets contemporary



Level 1 fitted space

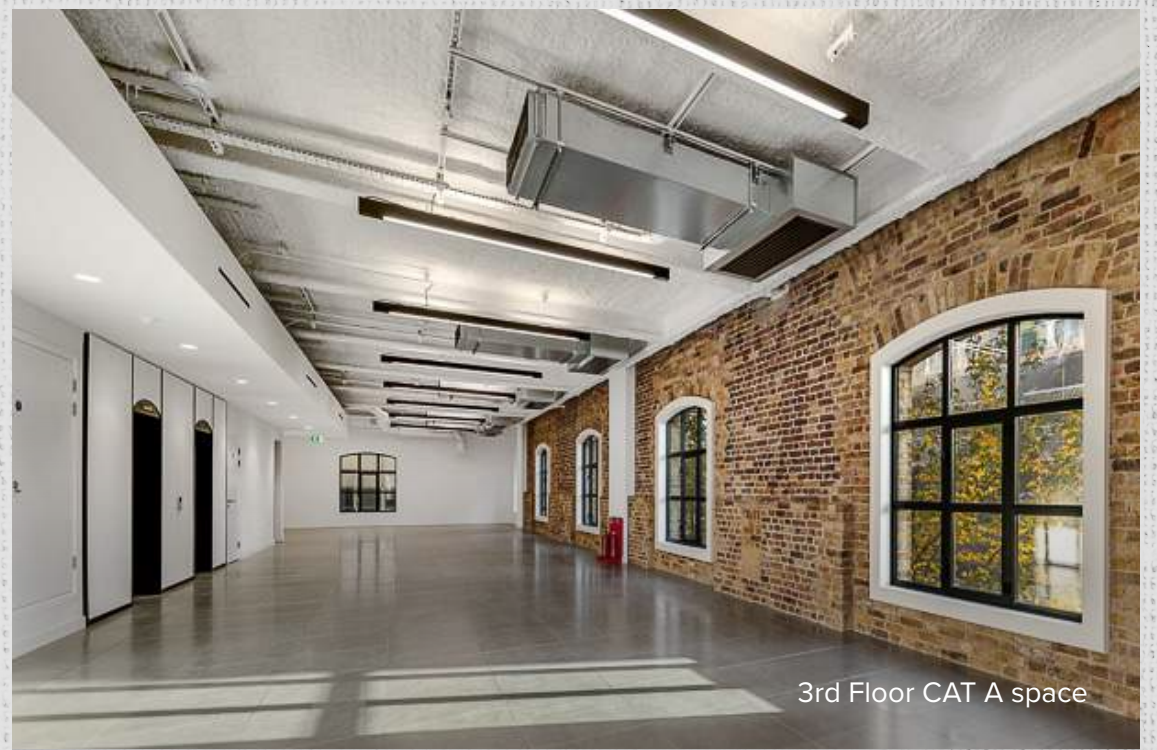
# Flooded with natural light



3rd Floor CAT A space

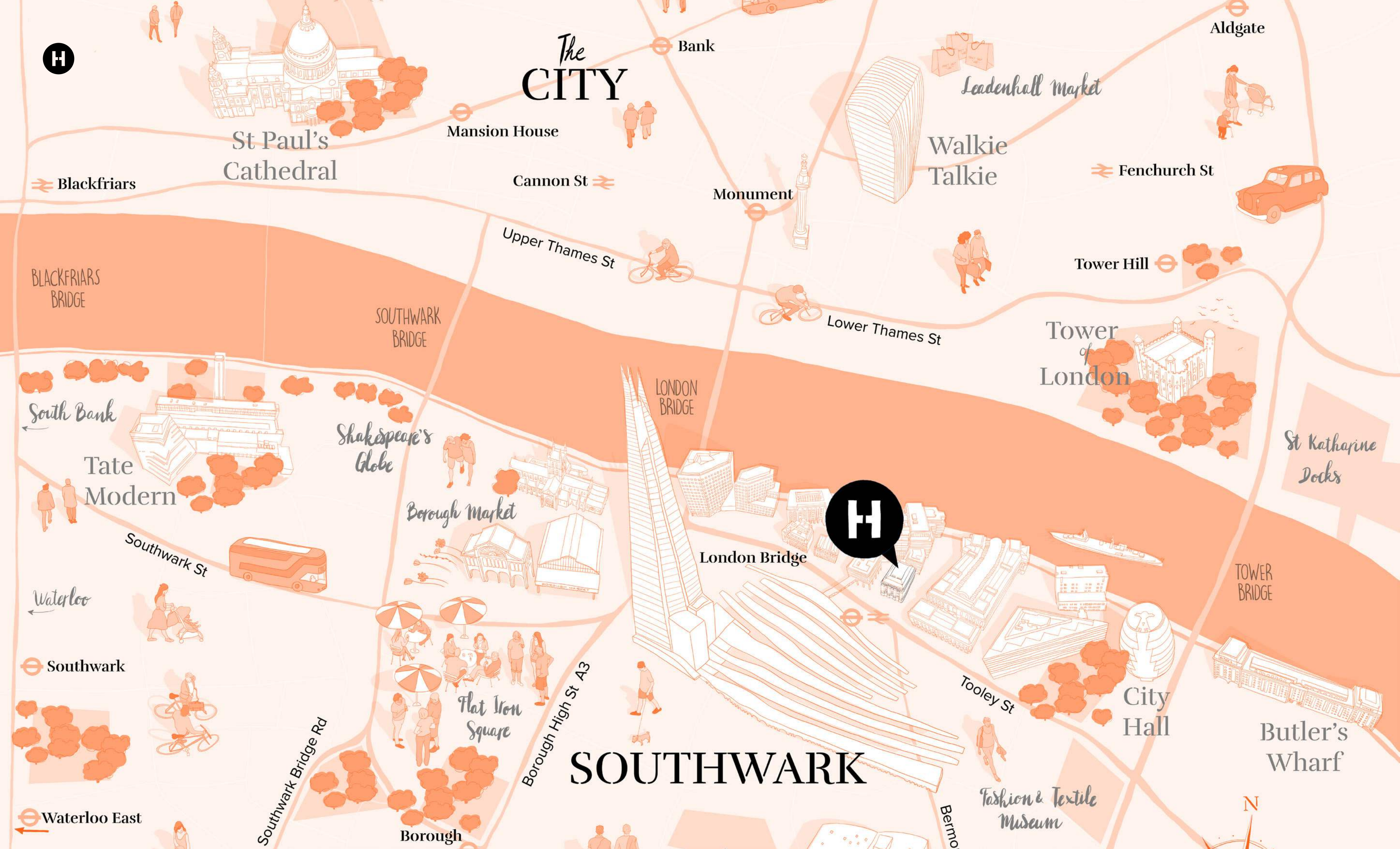


4th Floor CAT A space



3rd Floor CAT A space

# Location



# The CITY

# SOUTHWARK

St Paul's Cathedral

Mansion House

Cannon St

Monument

Walkie Talkie

Fenchurch St

Tower Hill

Tower of London

St Katharine Docks

TOWER BRIDGE

Butler's Wharf

Fashion & Textile Museum

City Hall

Tooley St

London Bridge

LONDON BRIDGE

Borough Market

Flat Iron Square

Shakespeare's Globe

Tate Modern

South Bank

Blackfriars

BLACKFRIARS BRIDGE

SOUTHWARK BRIDGE

Southwark St

Waterloo

Southwark

Waterloo East

Southwark Bridge Rd

Borough High St A3

Bermon





View of The City

Riverside sunset at London Bridge City



Tower Bridge



# Riverside working

Green spaces in London Bridge City



# An exceptional waterside campus

Hay's Galleria is packed with food, drink and shopping opportunities. Fantastic on and off-site amenities give tenants a truly rare variety of choice and convenience.



View of Hay's Galleria from the River

View of the Galleria



Shopping at Hay's Galleria



View of Hay's Galleria

Hay's Lane



North entrance to Hay's Galleria





# Steeped in History



1935  
Barges moored at Hay's Wharf.



1927  
Russian sailors watching gold from the Lena Gold Fields being unloaded from the SS Trotsky at Hay's Wharf. The shipment belongs to Messrs Rothschild.



1926:  
Unloading ships at Hay's Wharf.

# The Hay's Estate

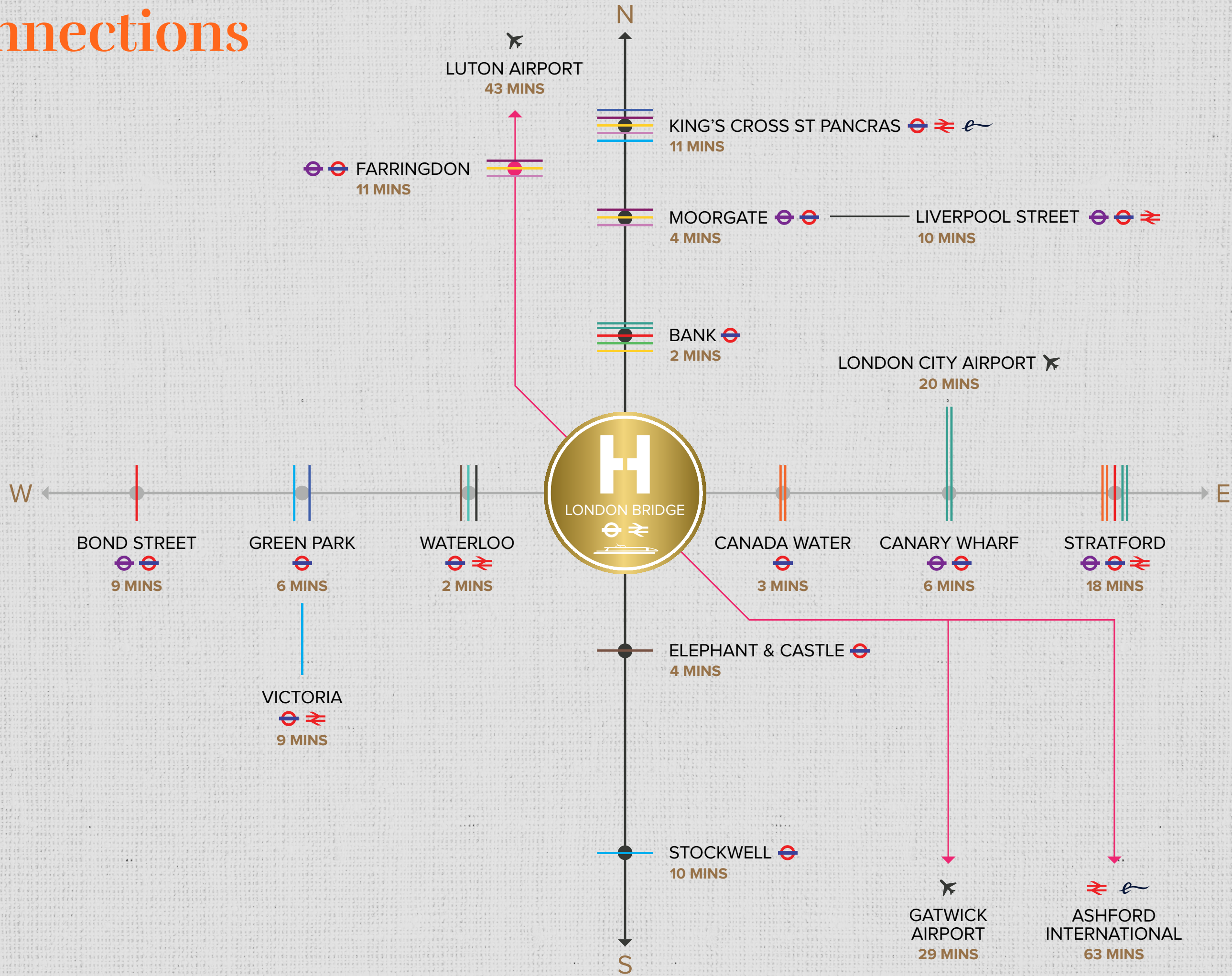


RIVER THAMES

\*ALL FIGURES BASED ON A TYPICAL FLOOR



# Connections





# Contact



**Holly Hamer**  
+44 (0)7471 725 112  
holly.hamer@cushwake.com

**Tom Fayers**  
+44 (0)7973 821 247  
tom.fayers@cushwake.com

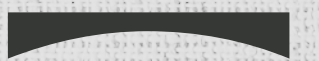
**James Taylor**  
+44 (0)7899 843 767  
james.taylor@cushwake.com

**Aliona Strukova**  
+44 (0)7819 855 734  
aliona.strukova@cushwake.com

**6hayslane.com**

A scheme by

**ST  
MARTINS**





HAYS GALLERIA

[HAYS-GALLERIA.COM](https://hays-galleria.com)